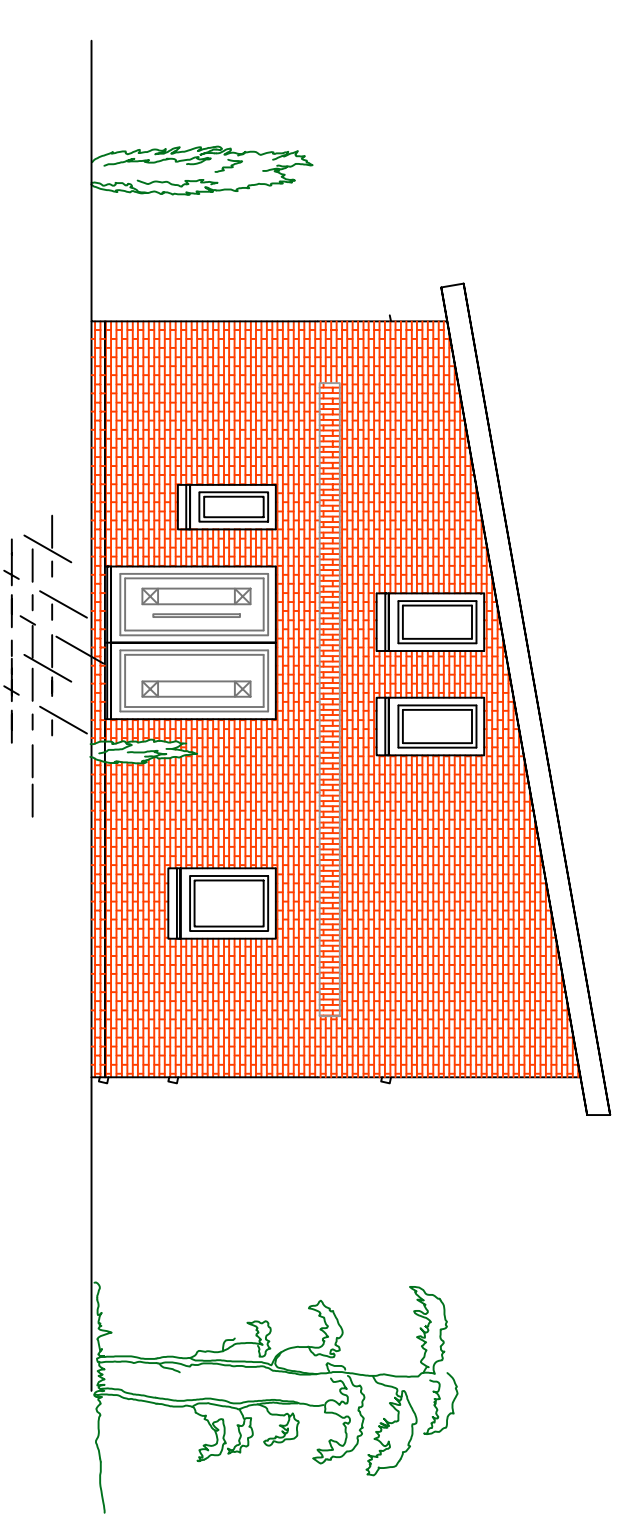
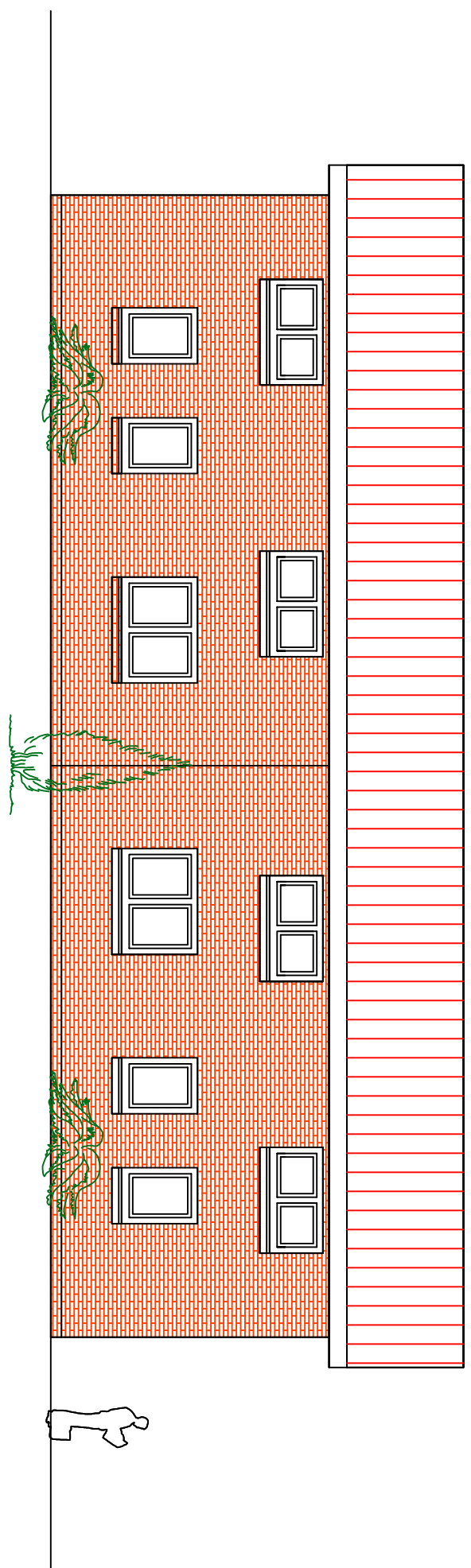


Ansicht von Süden  
(Lange Straße)

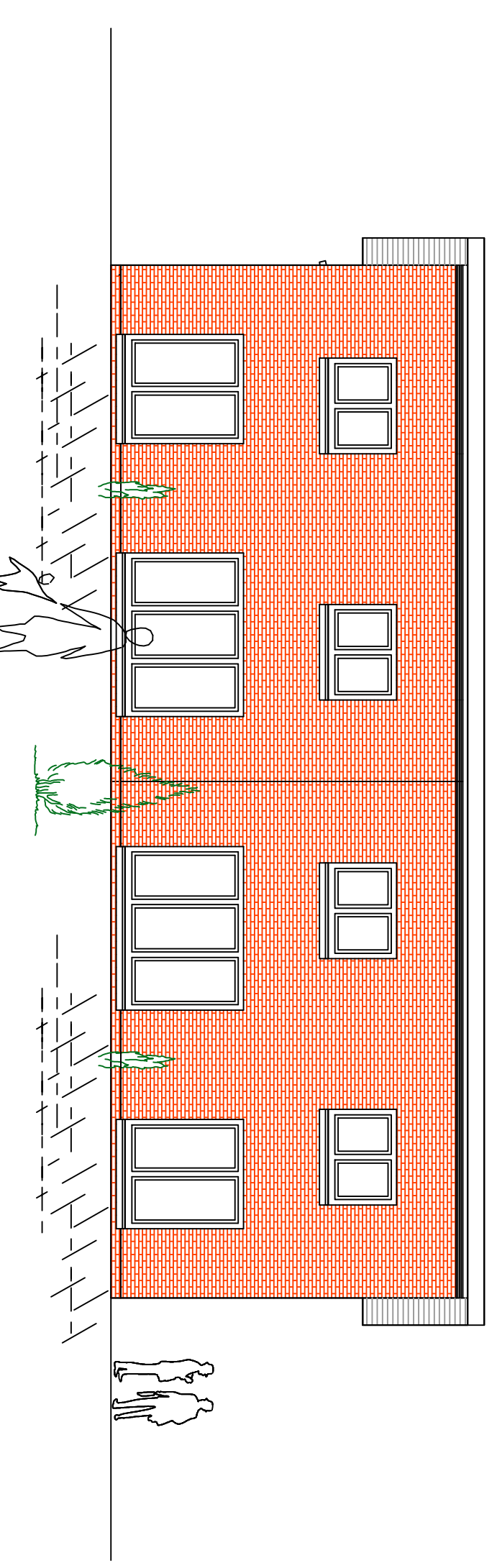
A n s i c h t e n



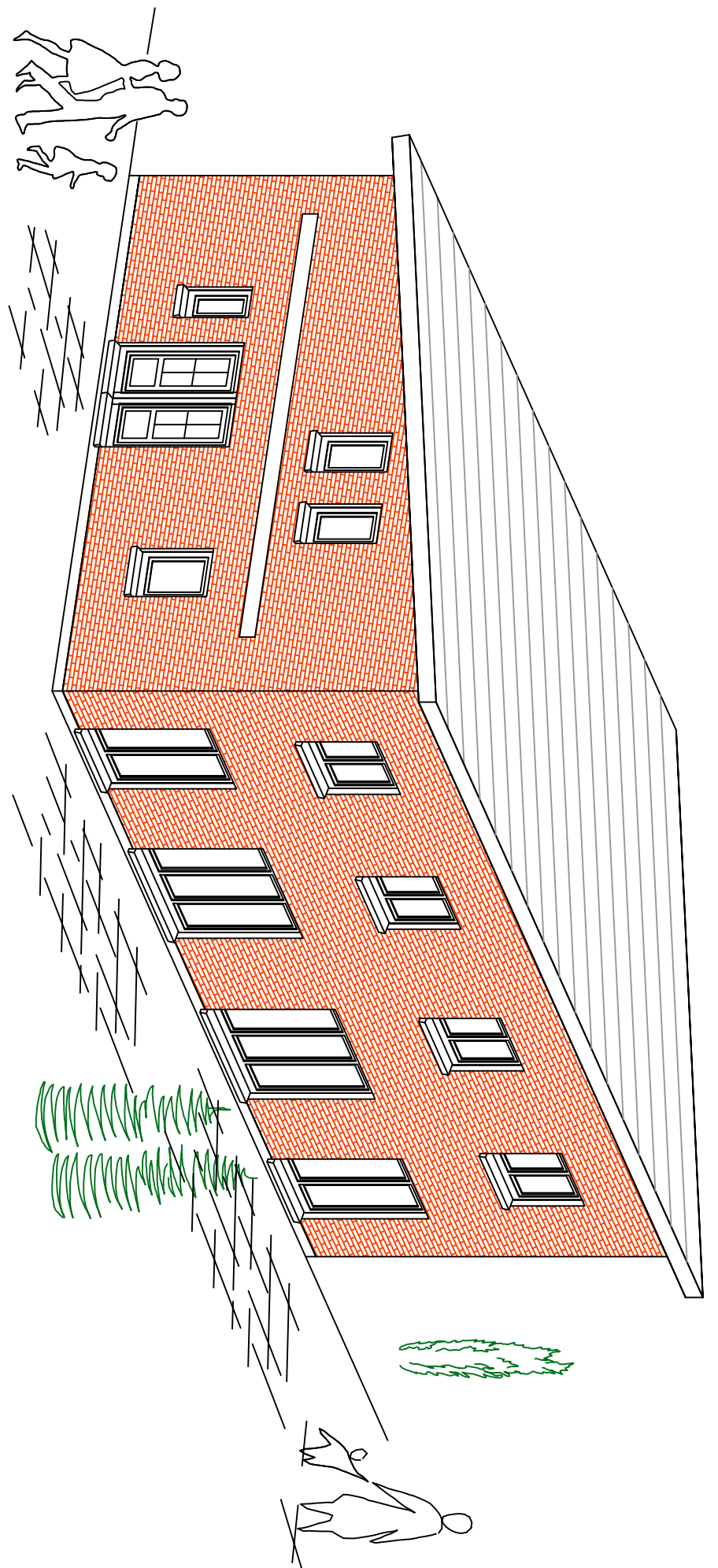
Ansicht von Norden



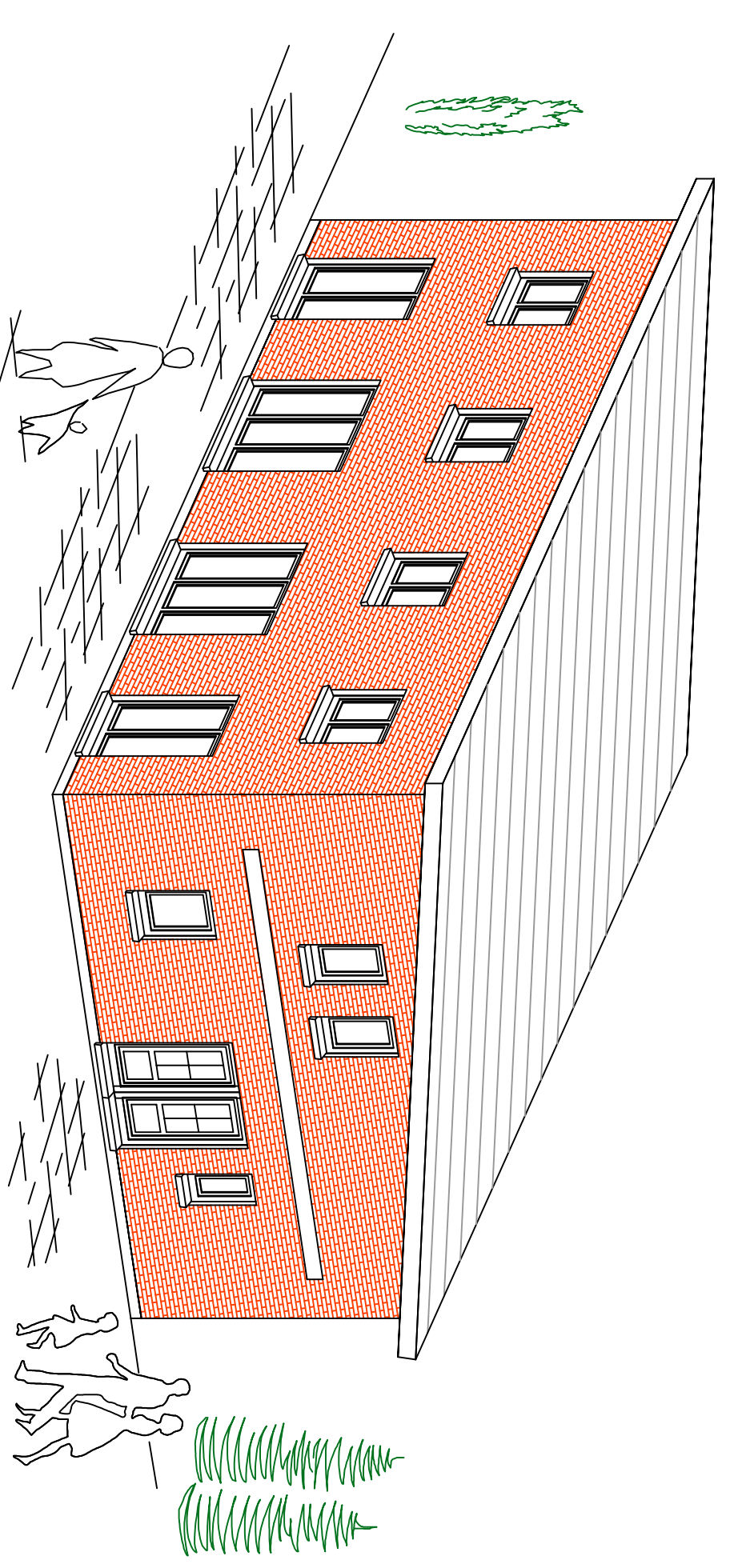
Ansicht von Osten



Ansicht von Westen



A n s i c h t e n



Bauvorhaben:

Neubau von drei  
Doppelhäuser in Zetel.

Bauherr:

Ralf Schmidt  
Kantstraße 13  
26452 Sande

Bauort:

Lange Straße 21  
26340 Zetel  
Flur 24  
Flurstück 54/2  
Gemarkung: Zetel

Maßstab = 1 : 100

Planverfasser:

Ralf Schmidt  
Maurermeister  
Kantstraße 13  
26452 Sande